



**LIVERMORES**  
THE ESTATE AGENTS

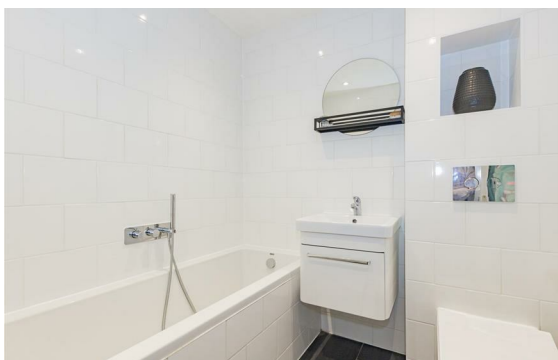
3 Bedrooms  
House - Townhouse  
Located in Crayford  
**£450,000**



[crayford@livermores.co.uk](mailto:crayford@livermores.co.uk)

[www.livermores.co.uk](http://www.livermores.co.uk)

01322 550777



**LIVERMORES**  
THE ESTATE AGENTS

126 Crayford Road  
Crayford  
Kent  
DA1 4ES

01322 550777

[crayford@livermores.co.uk](mailto:crayford@livermores.co.uk)

[www.livermores.co.uk](http://www.livermores.co.uk)

GUIDE PRICE £450,000 - £475,000 Situated in the sought-after Braeburn Park development of Crayford, this well-presented three-bedroom terraced townhouse on Bascombe Grove offers modern, versatile family living across three floors. The ground floor features a third bedroom, a convenient downstairs toilet, and access to a single garage.

The first floor boasts a contemporary kitchen/diner, filled with natural light, and a spacious reception room, serviced by the family bathroom. The second floor offers two generous bedrooms, including the master with an en-suite.

With 925 sq. ft. of living space, this property also benefits from off-street parking, a single garage, and a private garden with a decked seating area.

## Energy Efficiency Rating: C

Agents Note: Whilst every care has been taken to prepare these particulars, they are for guidance purposes only. All measurements are approximate and are for general guidance purposes only and whilst every care has been taken to ensure their accuracy, they should not be relied upon and potential buyers/tenants are advised to recheck the measurements.